


DPEC

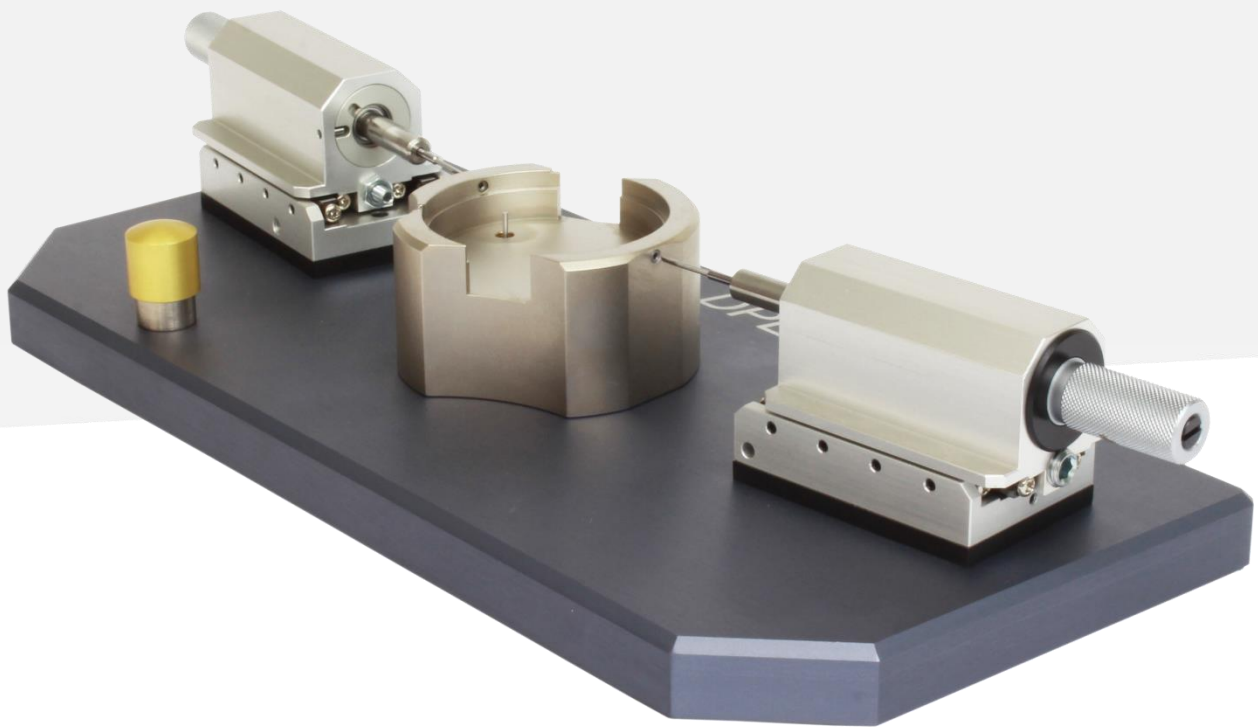
Screwing machine for dial feet (custom made)

Datasheet, 30.05.2023, V1.1

 Engineered and made in Switzerland

Machine functions

- Screw the dial feet
 - Adjustable torque wrench



Technical specifications

Weight : 1,3 kg
Dimensions (l/d/h) : 220 x 100 x 47 mm